





ONGOING RECLAMATION



EXISTING & HISTORIC RECLAMATION



PROPOSED RECLAMATION
(SUBJECT TO PUBLIC CONSULTATION)

KOWLOON

HONG KONG ISLAND

Patron Members

- BNP Paribas
- CITIC Pacific Ltd.
- HSBC
- Jardine Matheson Ltd.
- Kadoorie Group
- Kerry Holdings Ltd.
- Lai Sun Group
- Standard Chartered
- Sun Hung Kai Properties Ltd.
- The Swire Group
- The Wharf (Holdings) Ltd.



Who we are

The **Harbour Business Forum** has 120 members that come from a wide range of industries including professional institutions and service organisations.





Our Mission

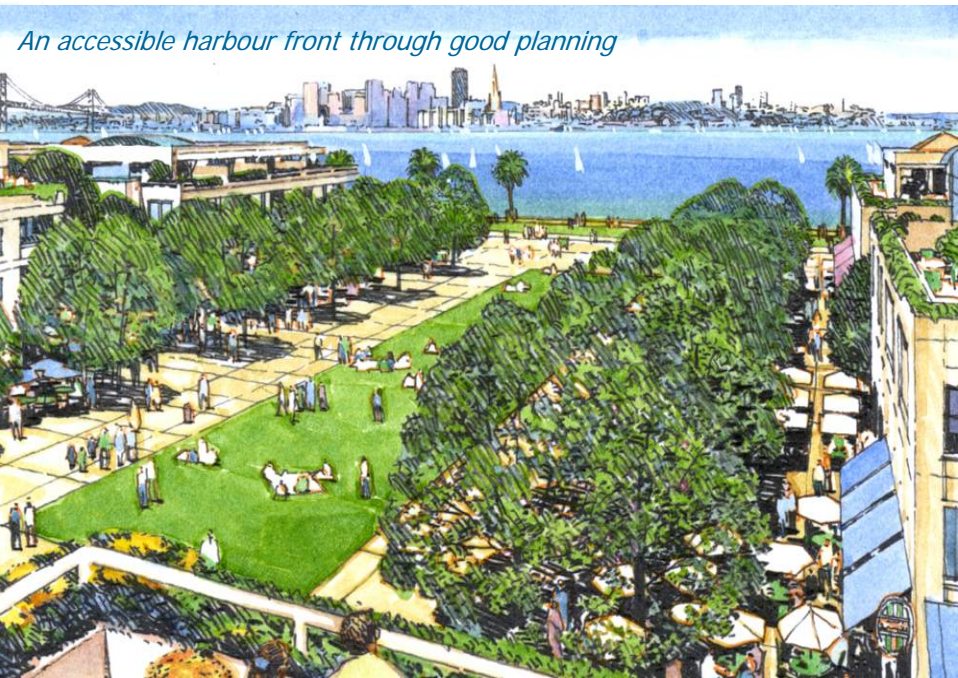
... is to see Hong Kong's Harbour and harbour-front areas become a genuinely vibrant, accessible and sustainable world-class asset





Our Concerns there is a lack of...

- ... a long term vision.
- ... a consistent and transparent framework.
- ... Government engagement with stakeholders.
- ... coordination across Government departments.



Basic Needs

- ... public access and enjoyment.
- ... an overarching policy and strategy.
- ... a clear institutional framework identifying the role and ownership of harbour planning.
- ... a transparent process for evaluating all existing and planned projects.



Completed and Current Programmes

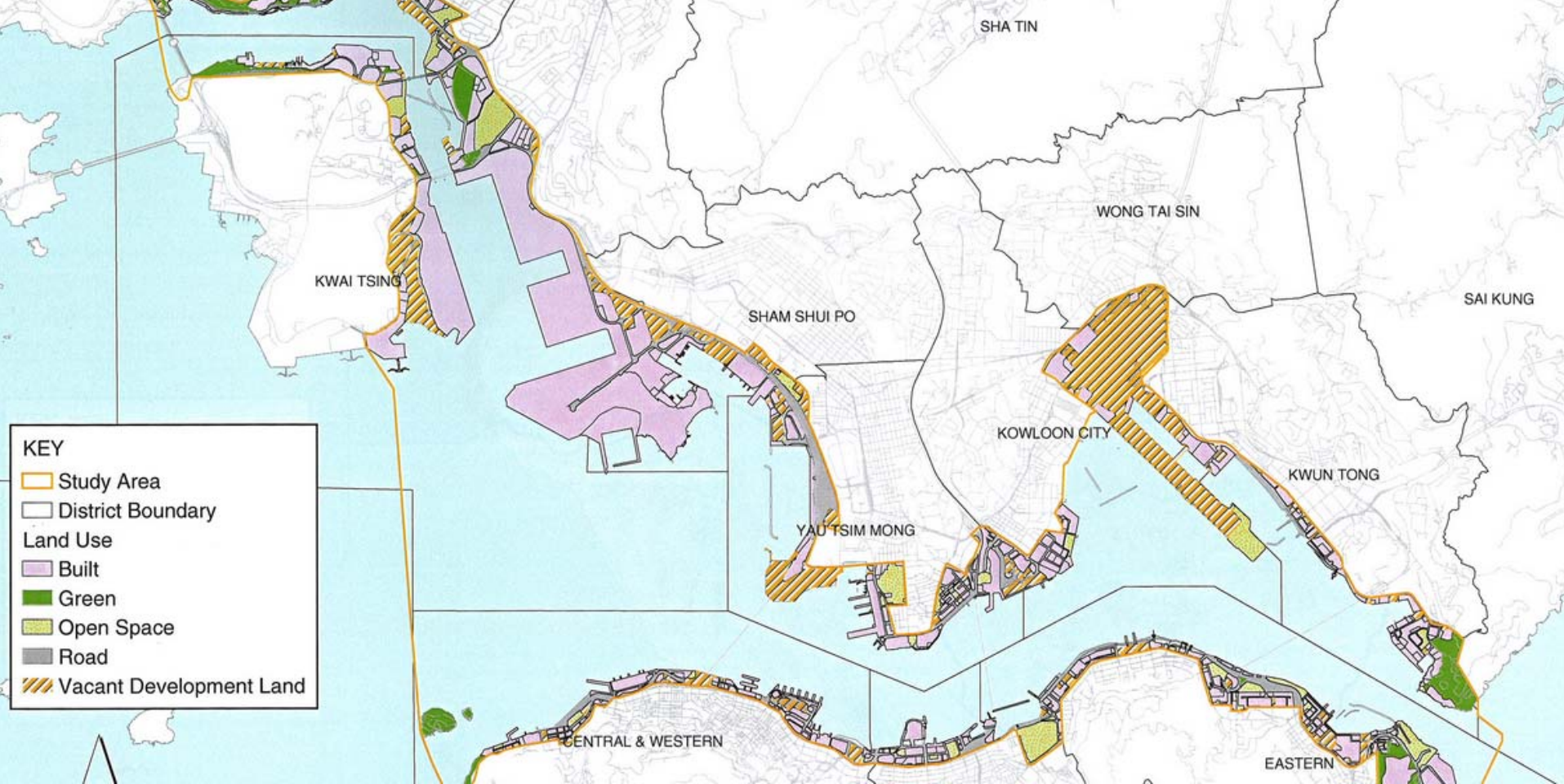
-  Lobbying
-  Research
-  Events





HBF Lobbying

- Met with senior Government officials 7 times
- Representations:
 - 7 to Government
 - 2 to Legco
 - 4 to Harbour-front Enhancement Committee
 - 4 to Town Planning Board
- Continue participation in HEC

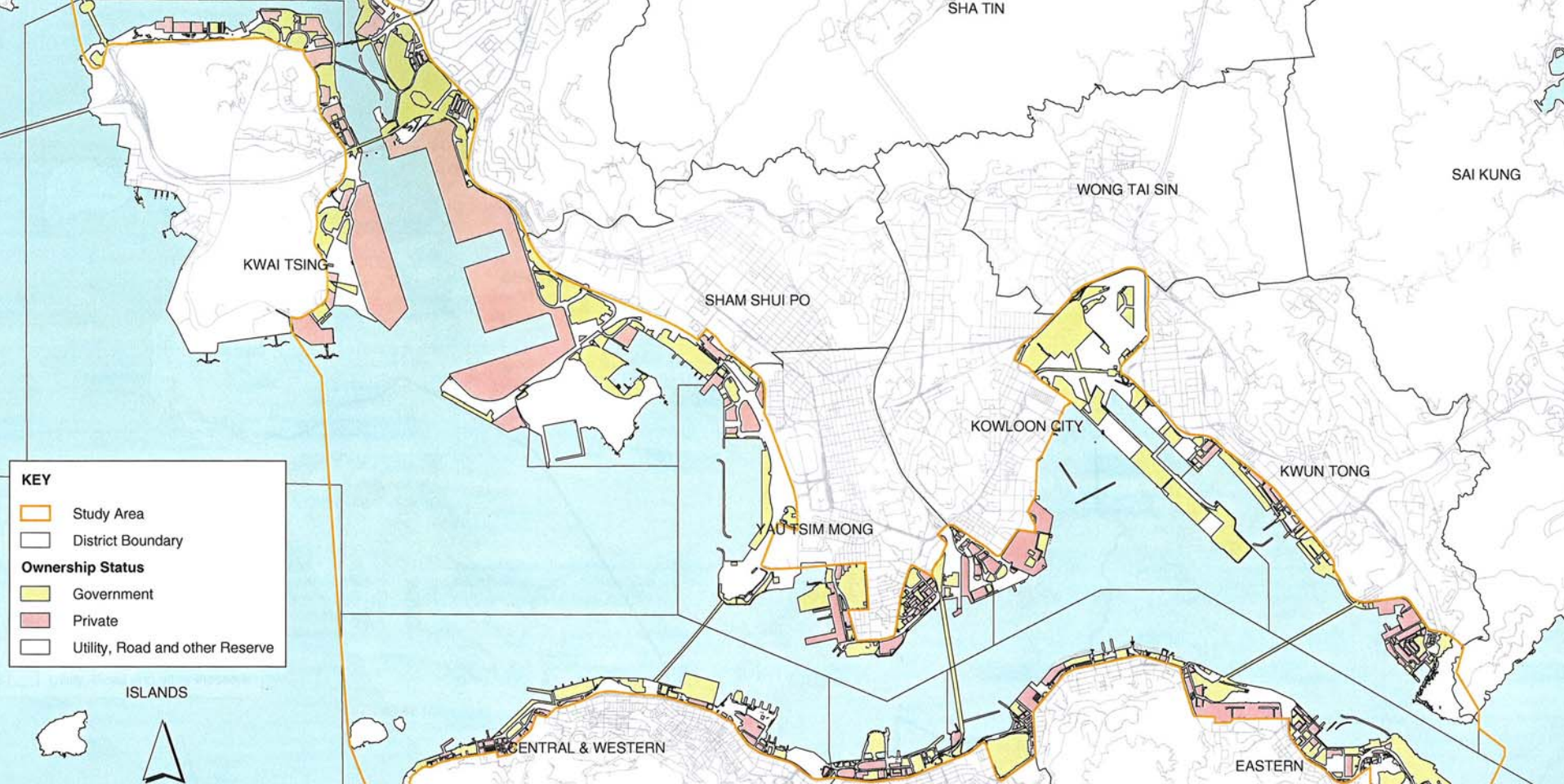


HBF Research
Audit

Land Utilisation

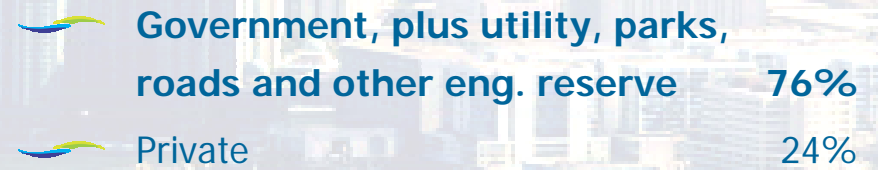
	Built	51%
	Road	18%
	Vacant Development Land	18%
	Open Space	7%
	Green	6%

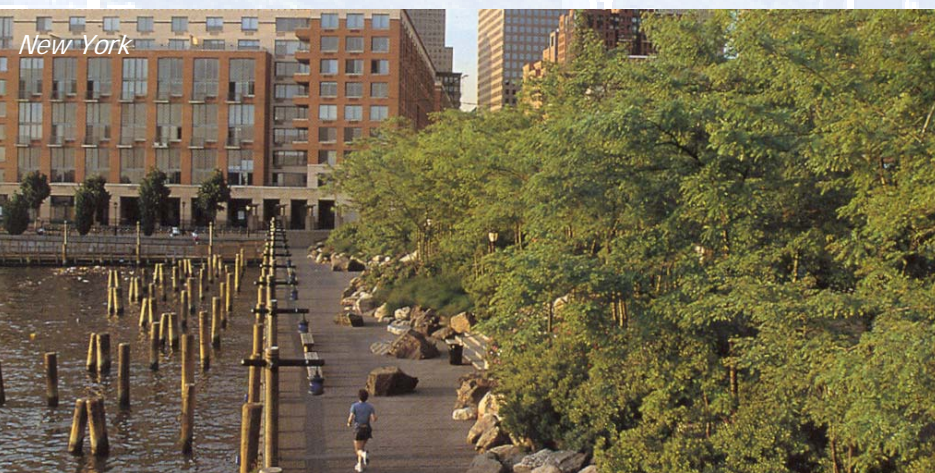




HBF Research
Audit

Coastline Ownership





HBF Research
**International Best
Practice**

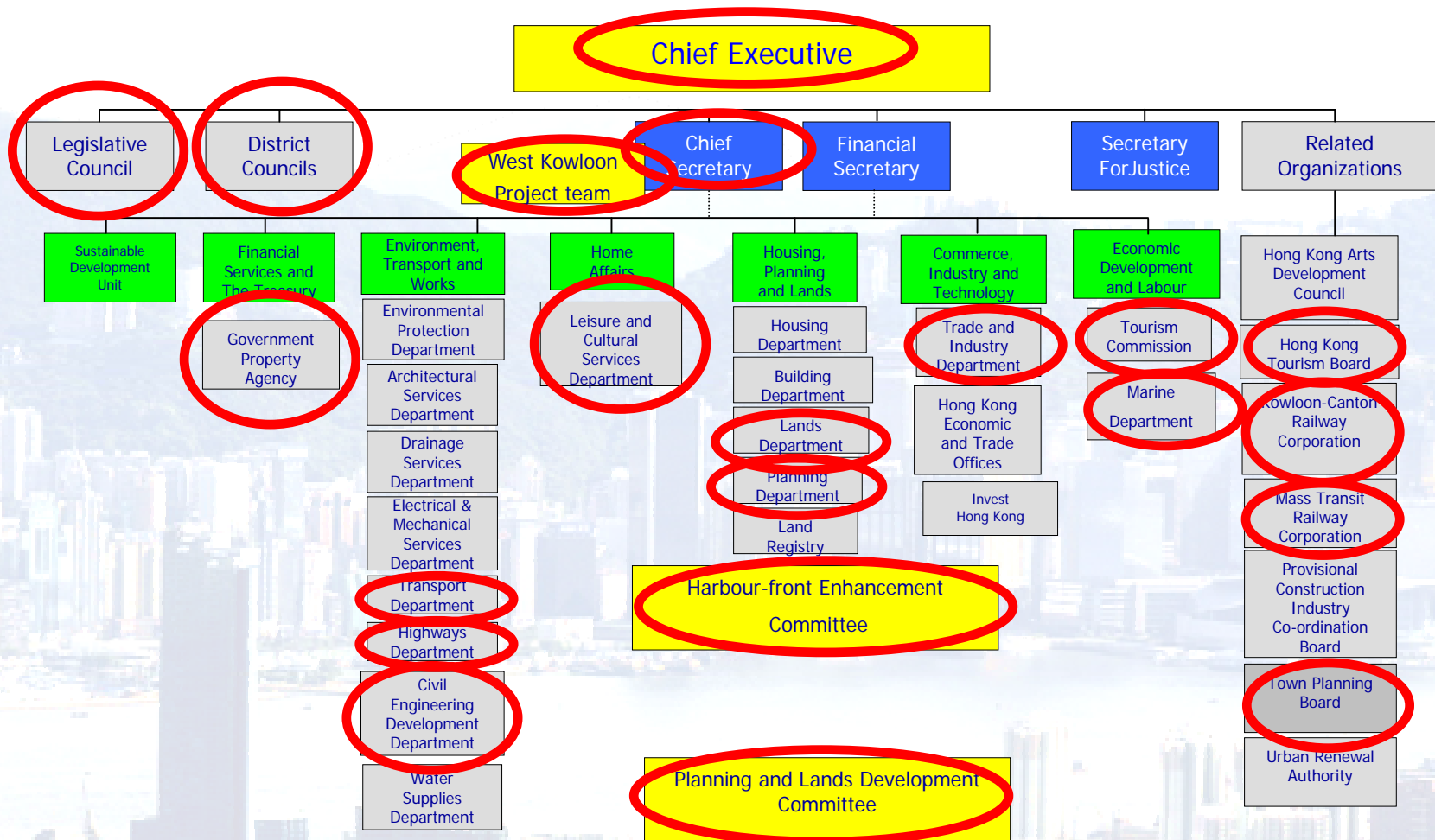


International Waterfront Development
Frameworks



Institutional Arrangements





Independent Harbour Body



Make the Harbour a priority.

Empower a "Champion".

 More of this <



 Less of this





HBF Research
Public Opinion Survey



Ascertain public attitudes toward the harbour and harbour-front



How they use the harbour now and what they would like their future harbour to be like





HBF Research
Value Study



Professional Valuation



Public's 'willingness to pay'



Contingent valuation



Harbour Planning Principles by the Harbour-front Enhancement Committee (HEC)

The Harbour Planning Principles are a set of guidelines for the sustainable planning, development and management of Victoria Harbour.

The principles are developed and monitored by the HEC

HBF Research

Creation of Guidelines for Harbour Planning Principles

Harbour Planning Principles

Principle 1 – Preserving and Enhancing Victoria Harbour

Principle 2 – Victoria Harbour is Hong Kong's Icon

Principle 3 – A Vibrant Unified Harbour

Principle 4 – An Accessible Harbour

Principle 5 – A Public asset

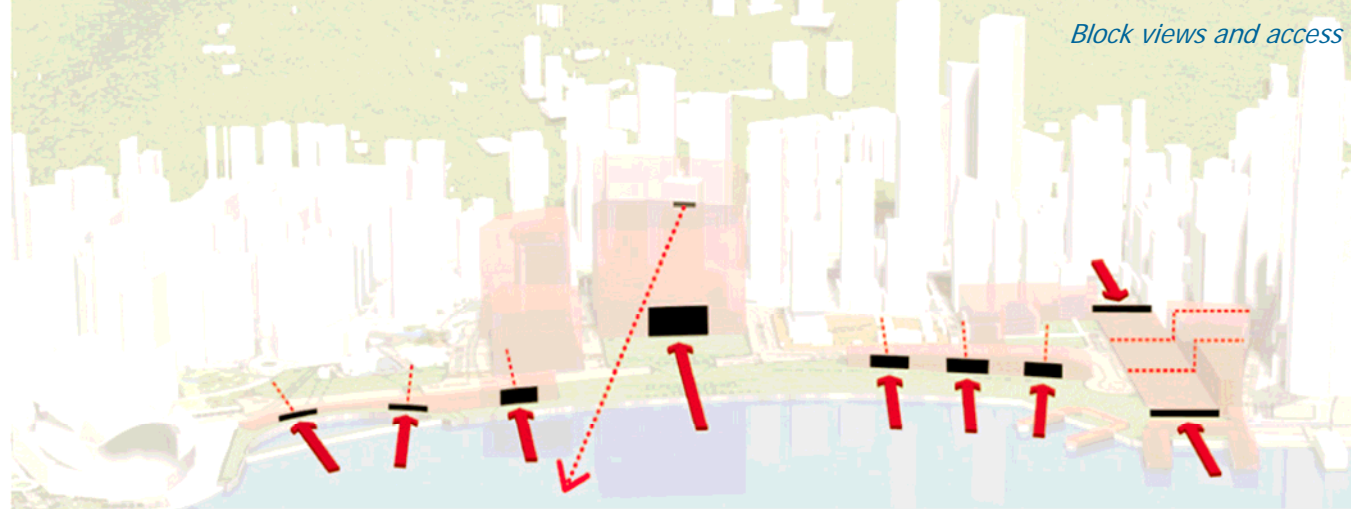
Principle 6 – Integrated Planning

Principle 7 – Sustainable Development

Principle 8 – Stakeholder Engagement



Block views and access








Require integrated planning



HBF Harbour Planning Guidelines

HBF Research

Central Review

-  Plan too broad in its allowances
-  Lack of spatial definition
-  Scale of roadway infrastructure and building envelopes are too massive
-  Physical and visual connections are obstructed
-  Long term integrated planning missing





HBF 2006 Program

-  Dialogue and engagement with Government.
-  Ongoing Research
-  'My Harbour' Public Competition with HK Arts Centre; March – May
-  Creating Valuable Cities conference with ULI & RICS; May
-  Monthly Roundtable Luncheon with HKGCC; 24 Jan +
-  Other events

www.harbourbusinessforum.com



Harbour Business Forum
海港商界論壇

THANK YOU