

# Passenger Transport



# Passenger Transport





# Passenger Transport









**Recommendation: Improve landing steps**



FOR DECORATIVE ONLY  
祇供裝飾



# Public Piers



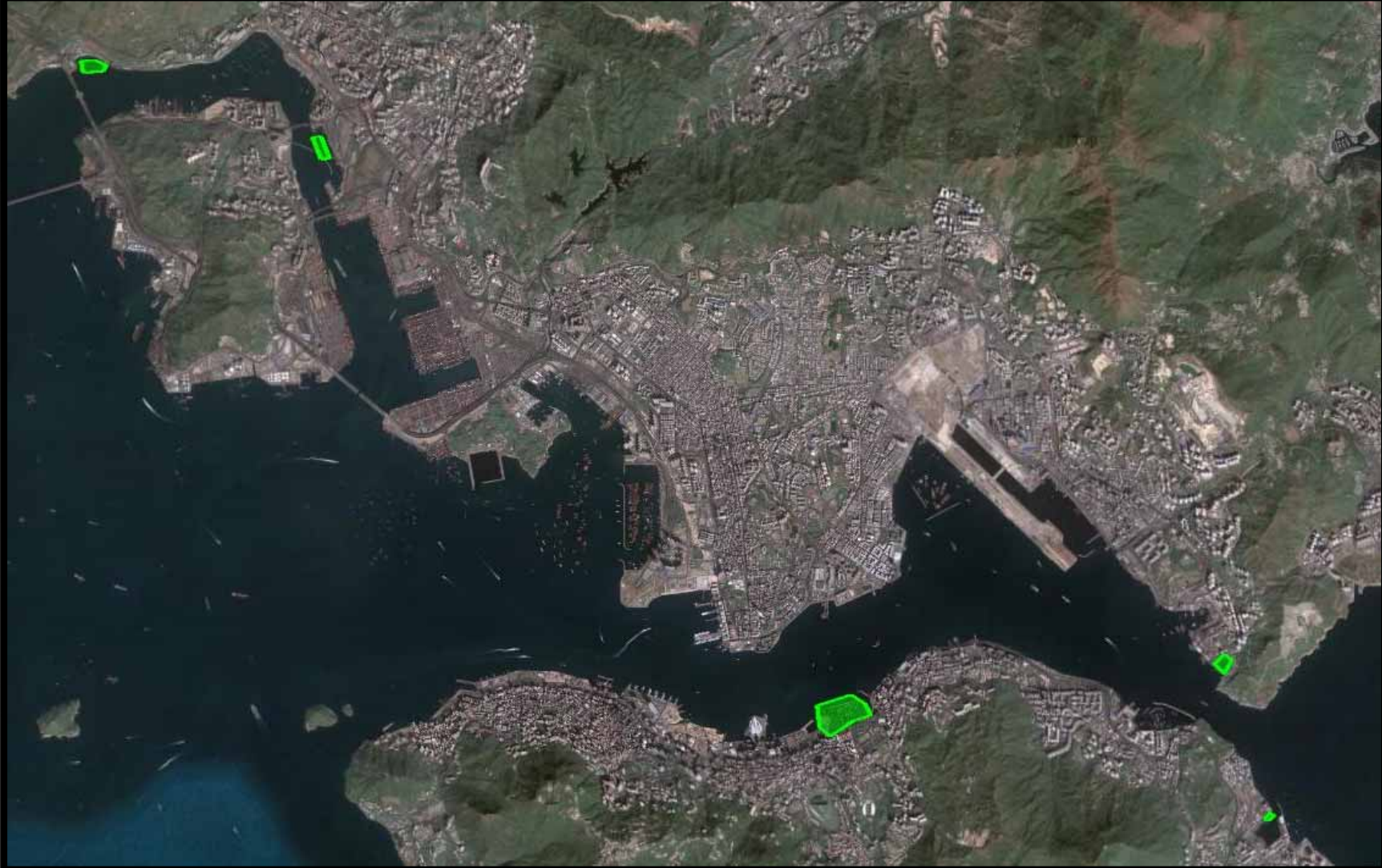
**Recommendation:** Add more piers and improve their quality

# Recreational Vessels & Floating Communities



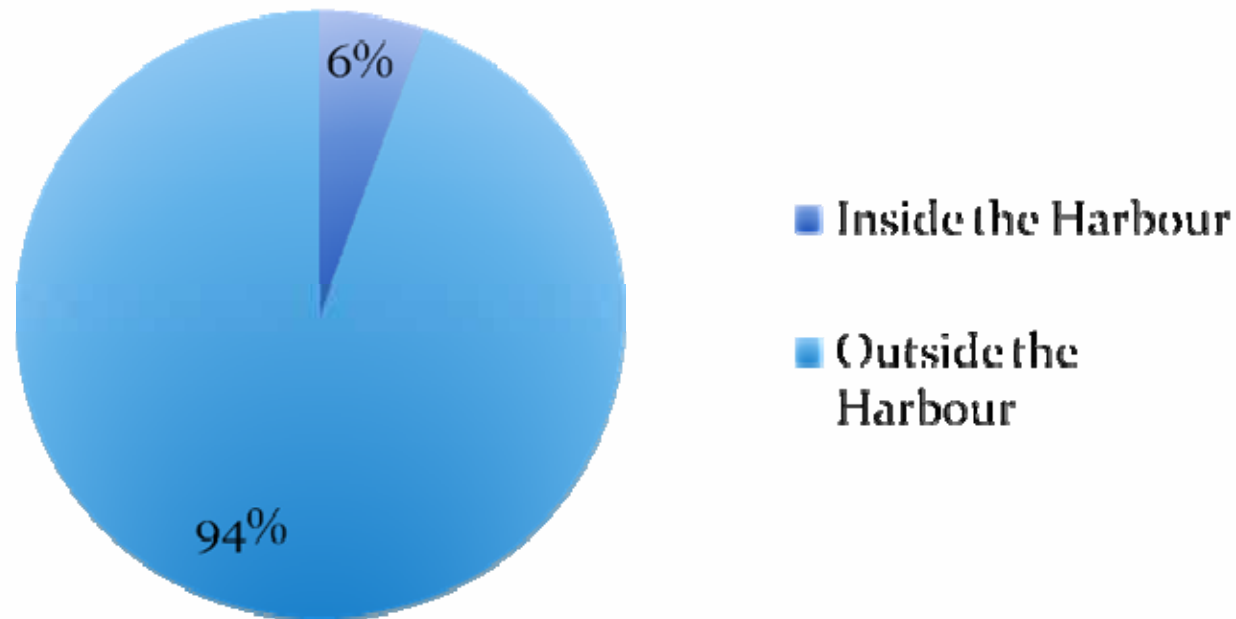


# Recreational Vessels & Floating Communities



# Recreational Vessels & Floating Communities

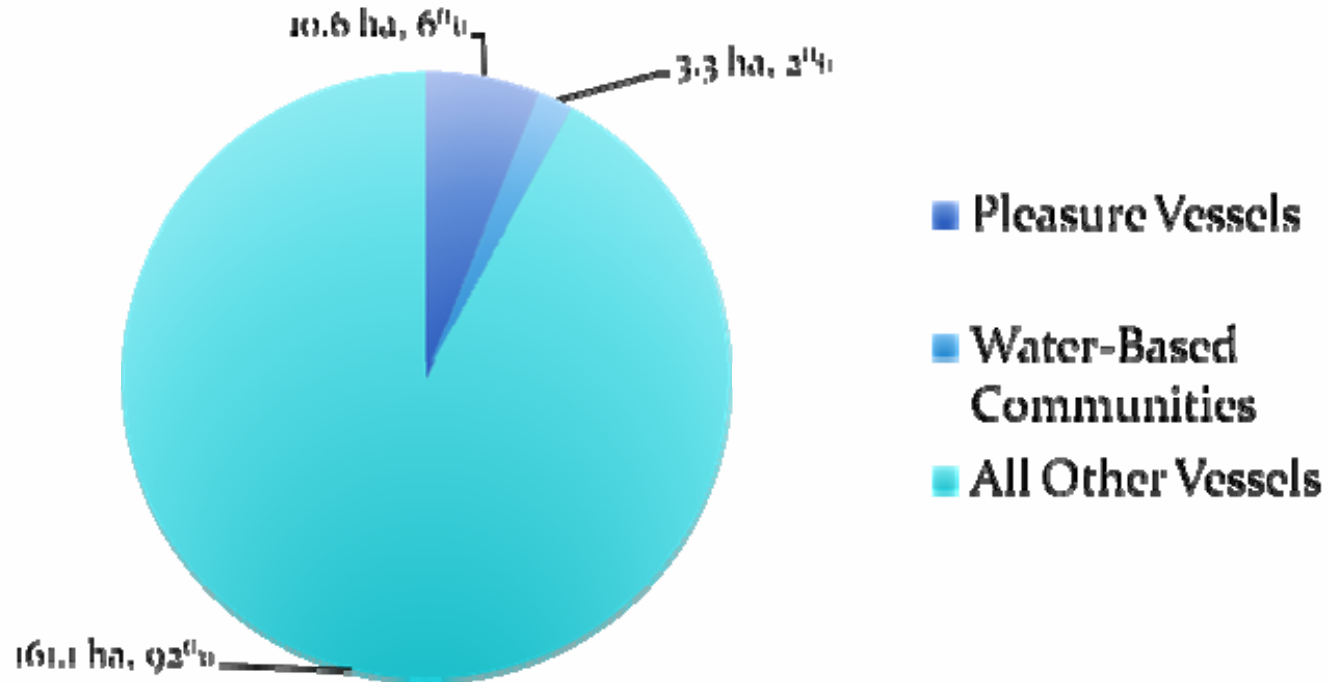
**Breakdown of Sheltered Water for  
Pleasure Vessels**



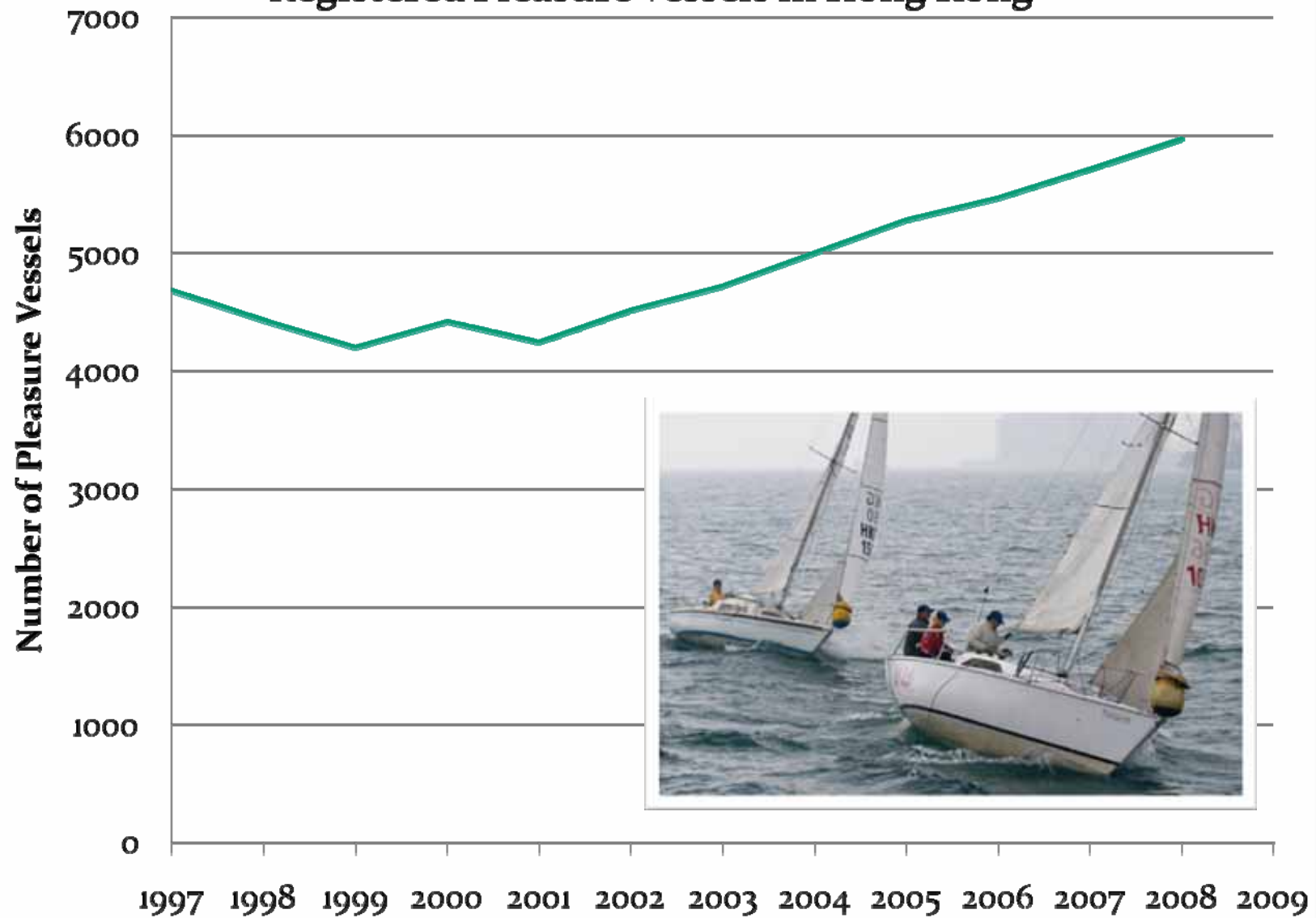


# Recreational Vessels & Floating Communities

**Breakdown of Sheltered Water Demand Inside the Harbour by User Class**



## Registered Pleasure Vessels in Hong Kong



Source: Marine Department



# Recreational Vessels & Floating Communities



# Recreational Vessels & Floating Communities





# Recreational Vessels & Floating Communities



# Recreational Vessels & Floating Communities





# Recreational Vessels & Floating Communities

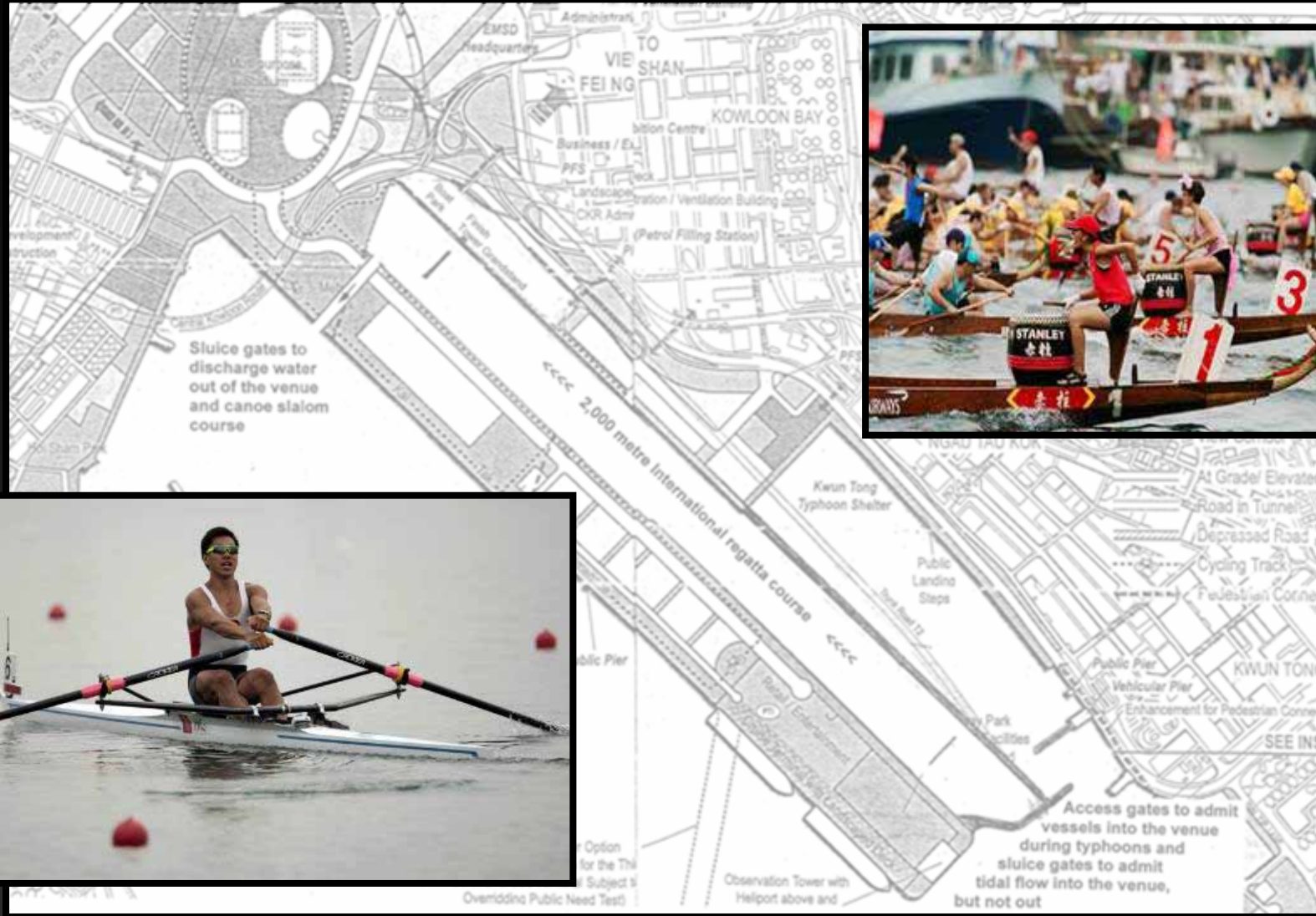


# Recreational Vessels & Floating Communities





# Recreational Vessels & Floating Communities

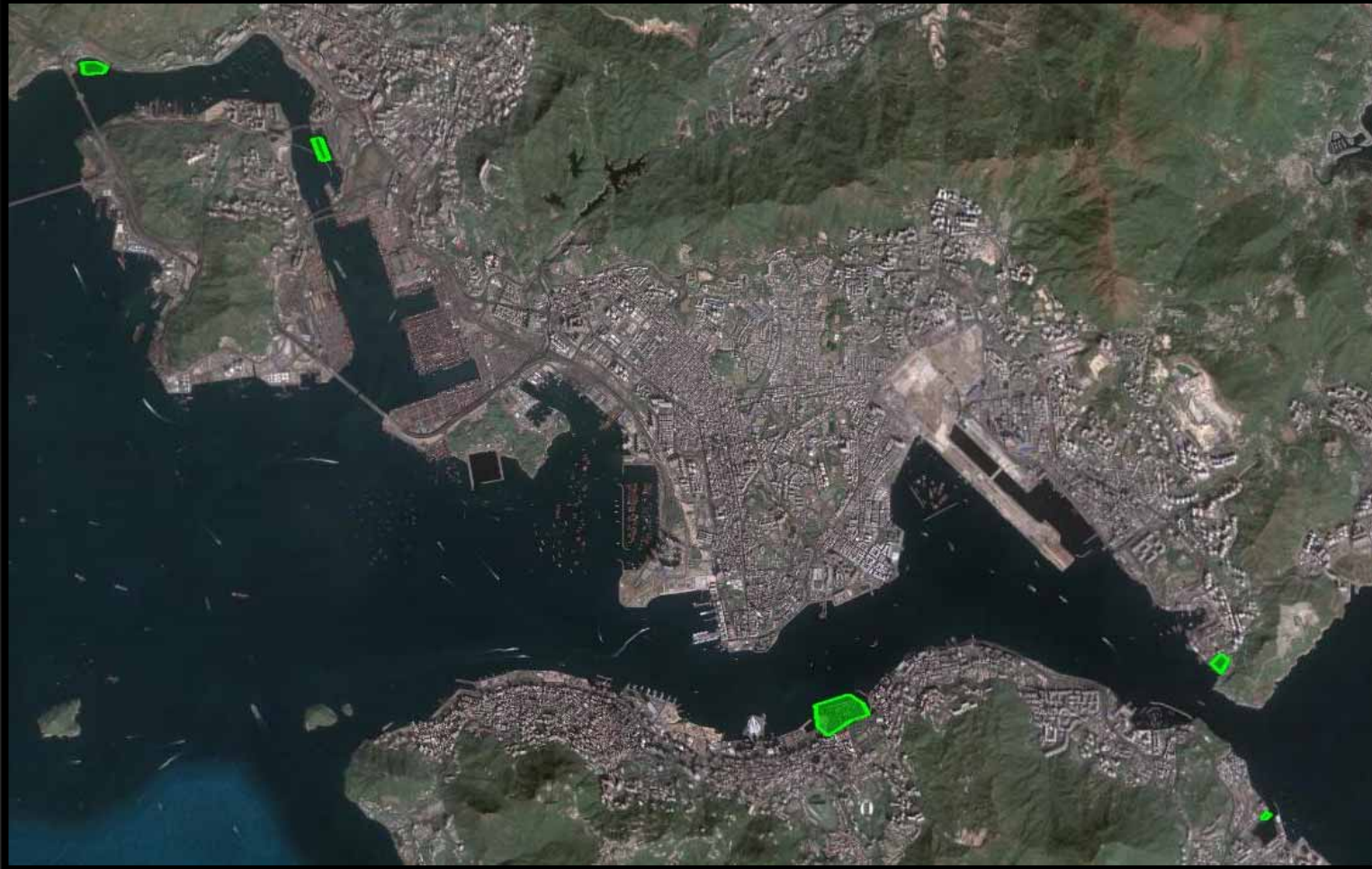






**Recommendation:** Include land-water interfaces, marinas, and watersports facilities in future developments

# Sheltered Water

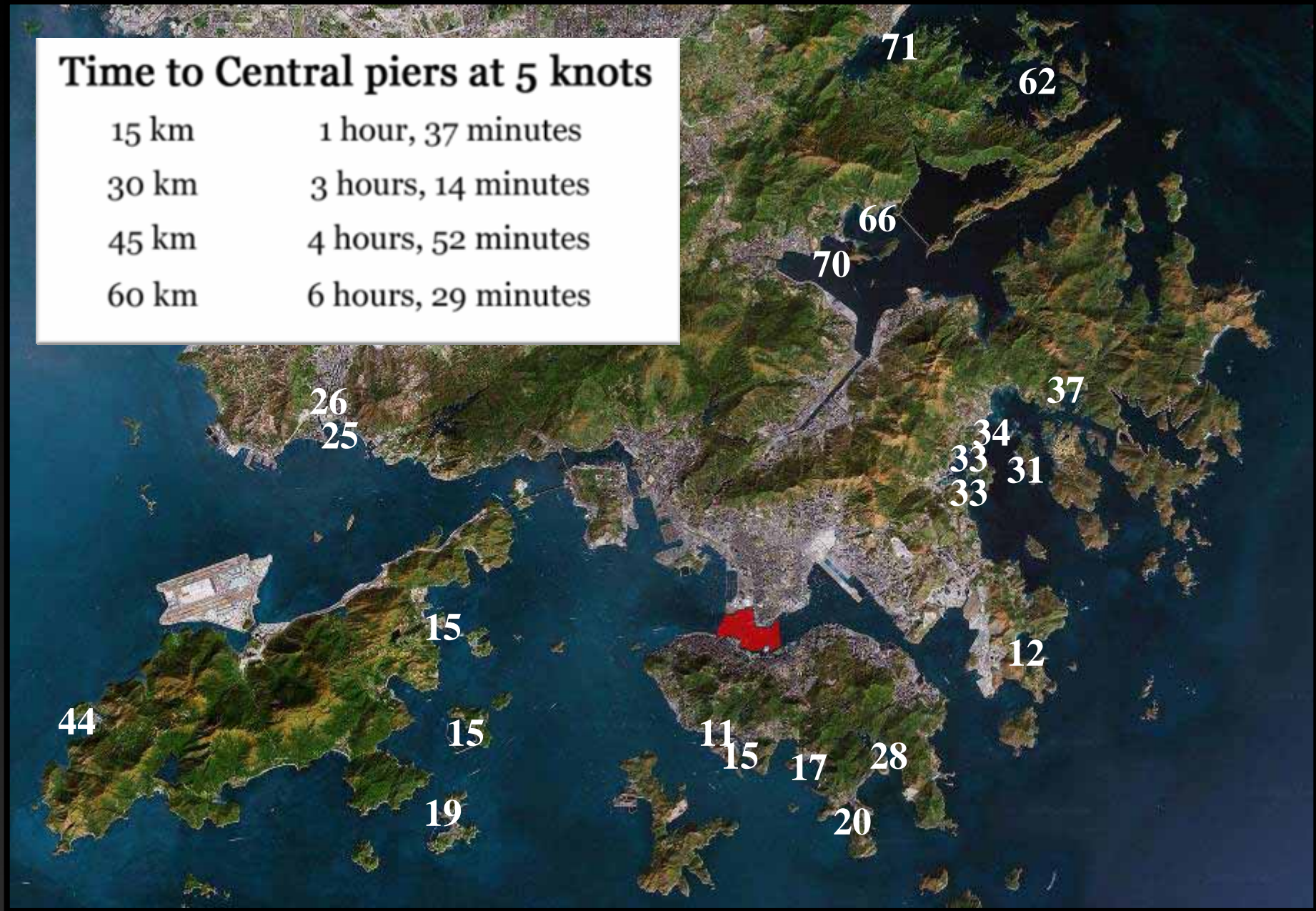


**Recommendation:** Increase the amount of sheltered water



## Time to Central piers at 5 knots

15 km	1 hour, 37 minutes
30 km	3 hours, 14 minutes
45 km	4 hours, 52 minutes
60 km	6 hours, 29 minutes



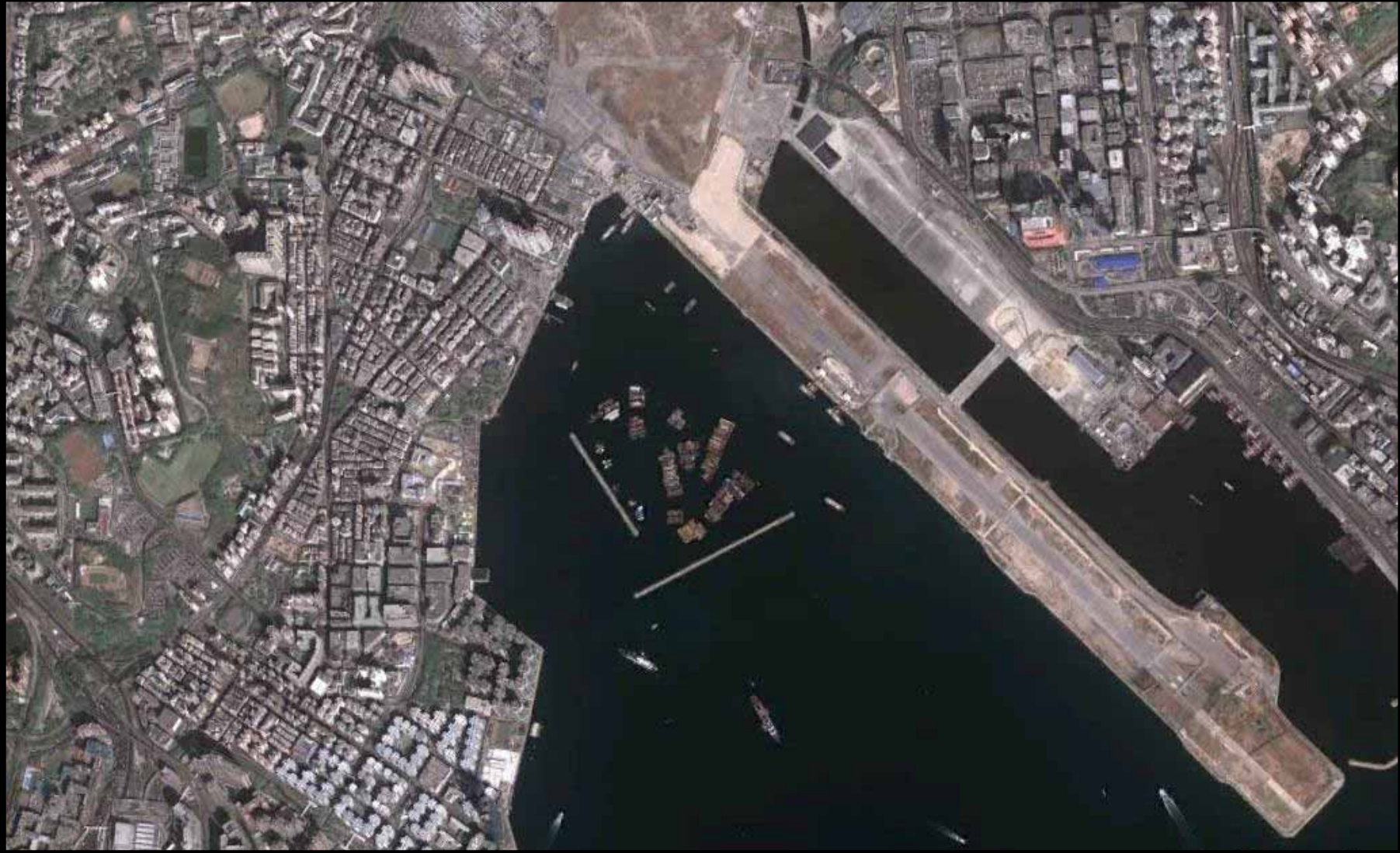
**Recommendation:** Increase the amount of sheltered water





**Recommendation: Increase the amount of sheltered water**





**Recommendation:** Increase the amount of sheltered water





**Recommendation:** Increase the amount of sheltered water

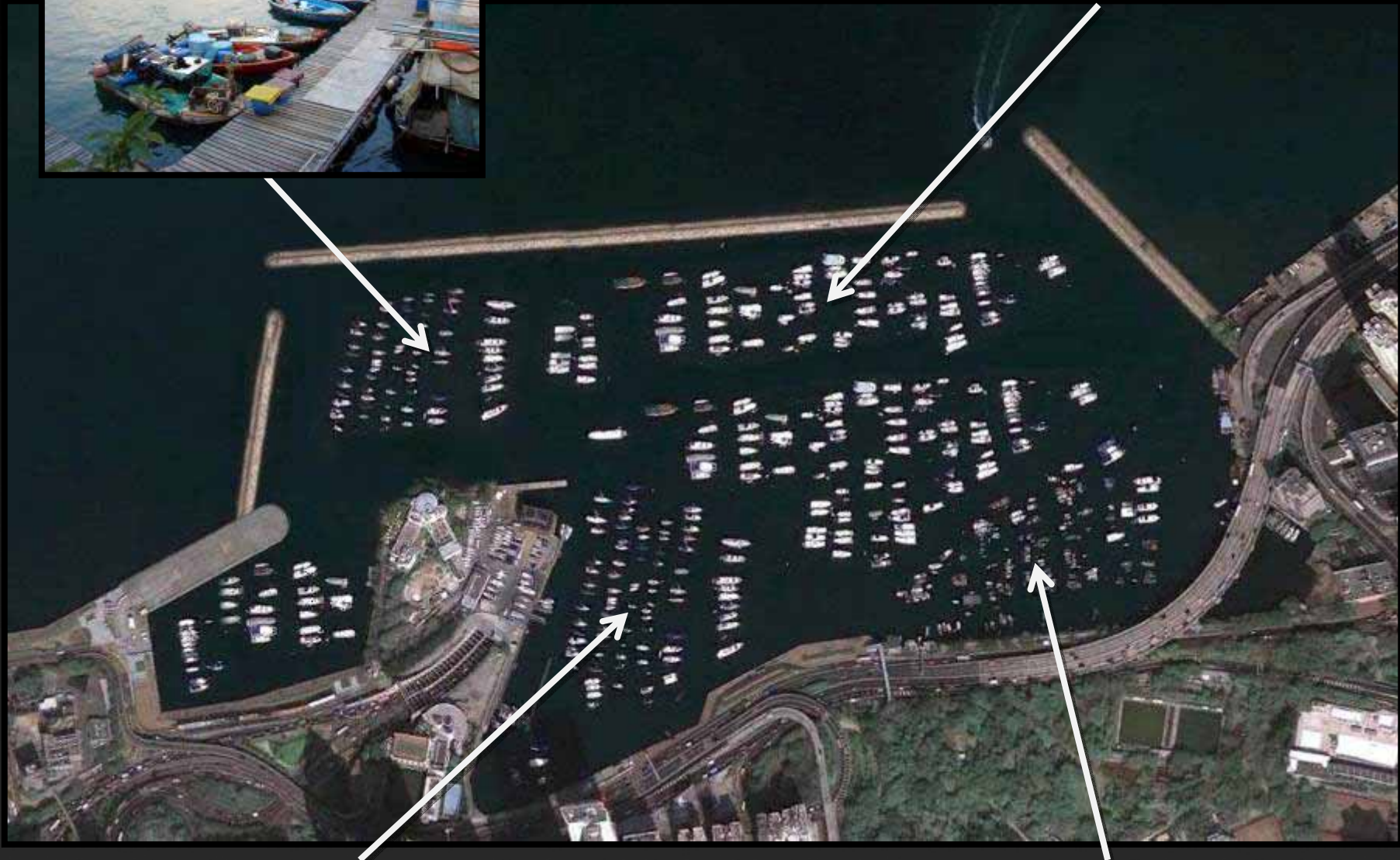




**Recommendation:** Increase the amount of sheltered water



Private Moorings



Royal Hong Kong Yacht Club

Floating Community

**Recommendation:** Increase the amount of sheltered water

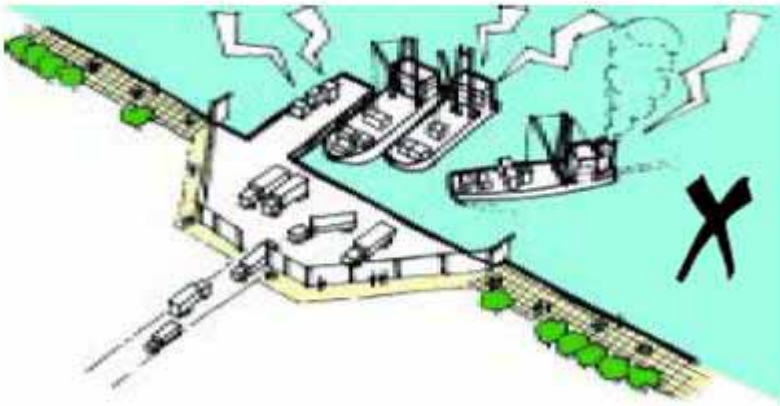


# Future Plans

# Urban Design Guideline



- Create an active waterfront with diversity in activities and functions including restaurants, bars, retail facilities, promenades and piers. Add well-designed landscaping and street furniture where appropriate.



- Provide promenades along the waterfront and avoid incompatible land uses. Sites along the waterfront should be reserved for cultural, tourism-related, recreational and retail activities.



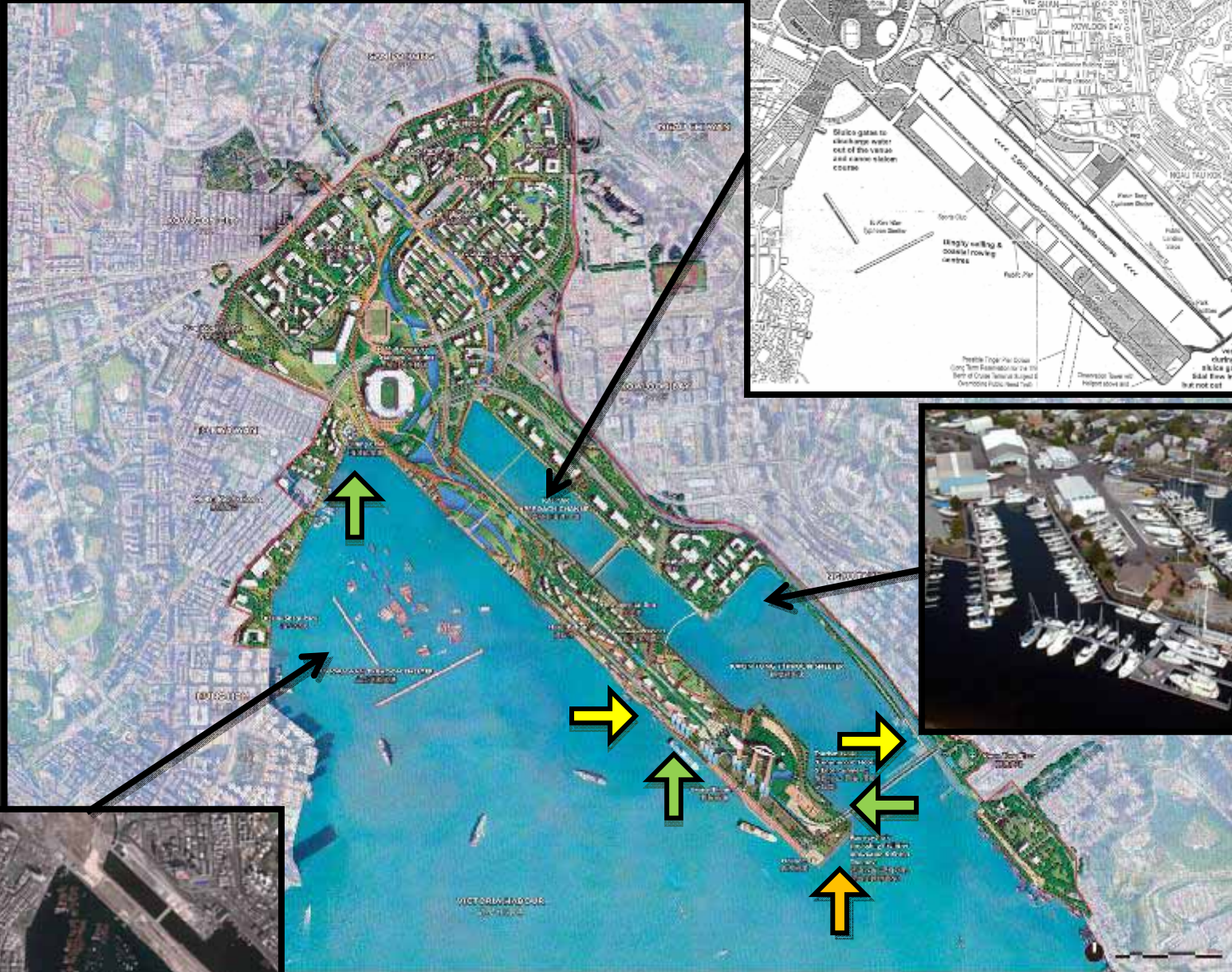


Figure 4 Urban Design and Landscape Illustrative Plan 圖四 城市設計及景觀示意圖





**Legend 圖例**

Anchoring Public Spaces along the waterfront 海濱的錨定公共空間

**Leisure and Recreation Facility 消閒及康樂設施**

- A1 Board Walk 木棧步行徑
- A2 Ferry Plaza 渡輪廣場
- A3 Statue Square Corridor with Landscaped Deck and Landscaped Open Space at-grade 皇后大道中廣場平台及地層園林綠地
- A4 Clock Tower & Gallery 鐘樓及展覽館
- A5 Entrance Plaza 入口廣場
- A6 Reconstituted Queen's Pier 皇后碼頭遺址展館
- A7 Bicycle Station 單車站
- A8 Water Feature 水景
- A9 Edinburgh Place 愛丁堡廣場
- A10 Harbour Place (Waterfront-adjacent Commercial and Leisure Uses) 海港廣場 (與海濱有關之商業及康樂用途)
- A11 Viewing Platform 觀景平台
- A12 Cycle Track 單車徑
- A13 Food and Beverage Kiosk 餐飲設施
- A14 Festival Lawn 草坪
- A15 Harbourfront Promenade 海港長廊
- A16 Viewing Platform (Sculpture Garden Theme) 觀景平台 (園林主題)
- A17 Woodland 園林綠地
- A18 Waterfront Event Plaza 海港廣場
- A19 Green Carpet 草徑
- A20 Merits Place (Waterfront-adjacent Commercial and Leisure Uses) 德輔道中 (與海濱有關之商業及康樂用途)
- A21 La Ramblas 拉馬沙公園
- A22 Art Event Plaza 藝術廣場
- A23 Public Landing Steps 公眾登陸梯
- A24 Marine Place Boardwalk 海洋廣場木棧

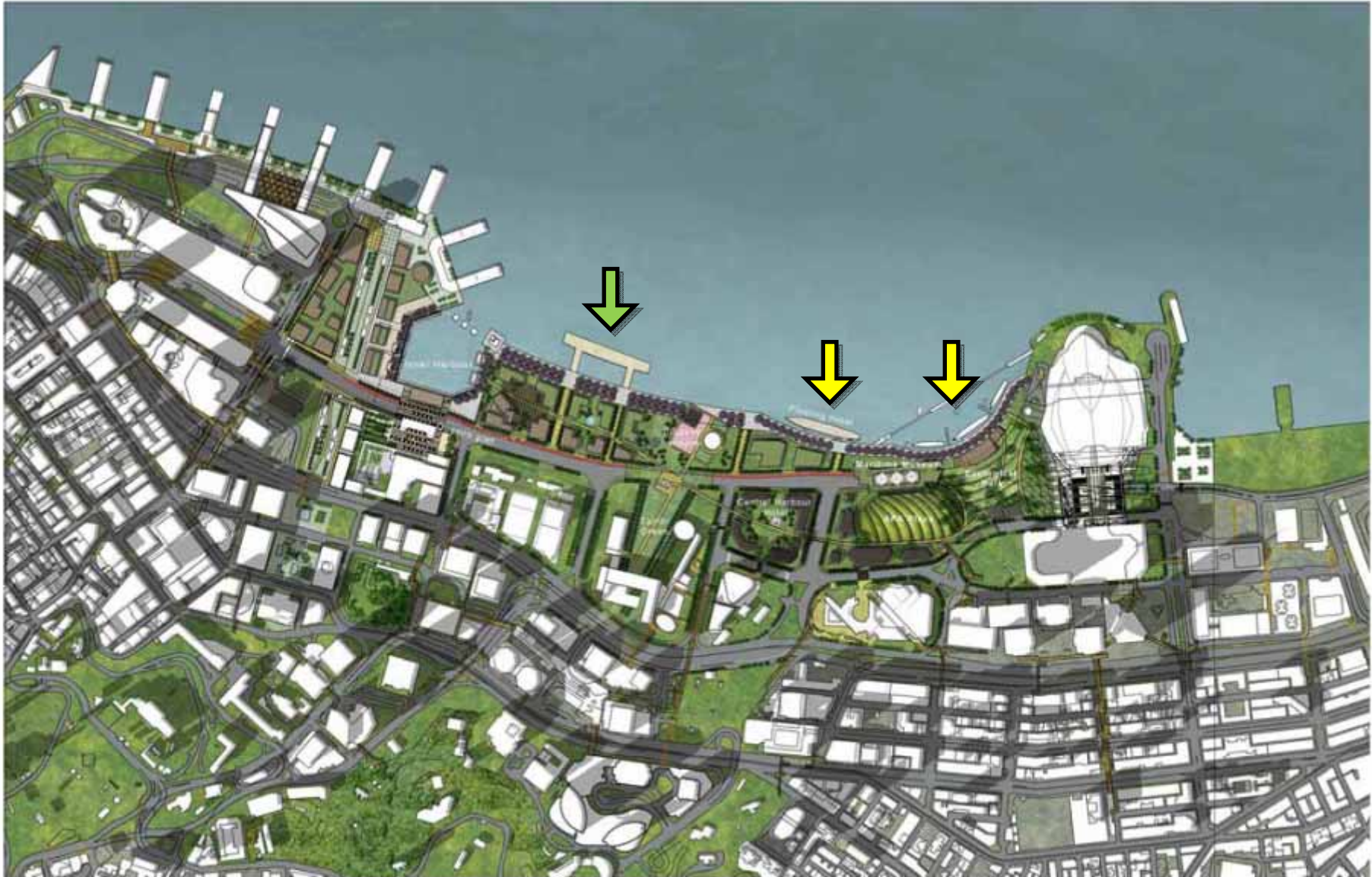
**Public Facility 公共設施**

- B1 Elevated Walkway 高架行人走廊
- B2 CWB Ventilation Building 中環新行機道通風大樓
- B3 Landscaped Deck 綠地平台
- B4 Electricity Supply Station (below elevated walkway) 電力供應站 (於高架行人走廊之下)
- B5 Environmentally Friendly Transport Reserve 環保巴士專用泊位
- B6 Tree-Lined Boulevard 樹林綠道
- B7 P/LA Berth 郵政軍事碼頭
- B8 Ventilation Shaft 通風塔
- B9 Military Access 軍民通道
- B10 Electricity Supply Station 電力供應站
- B11 Hong Kong Academy for Performing Arts Extension 香港演藝學院擴建部分
- B12 Proposed Hong Kong Visual Arts Education Centre 擬議之香港視覺藝術教育中心
- B13 Landscaped Deck by HKCCB West 德輔道中香港會議展覽中心西翼的綠地平台

**Commercial Facility 商業設施**

- C1 Retail / Cafe / All-terrain Dining over the Pier 或於上蓋之電單車化 / 酒吧 / 露天飲食設施
- C2 Retail / Exhibition / Gallery 零售展銷及展覽設施
- C3 Iconic Building 地標性建築
- C4 Office with Retail below 辦公室大樓及位於零售樓底
- C5 Landscaped Podium with Retail below 觀景平台及位於零售樓底
- C6 Retail 零售商店
- C7 Office 辦公室大樓
- C8 Landscaped Podium 觀景平台
- C9 Hotel 酒店







**LEGEND:**

-  Study Area Boundary
-  Proposed North Island Link
-  Proposed Station to Central Link
-  Trunk Road Tunnel Alignment

**PROPOSED**

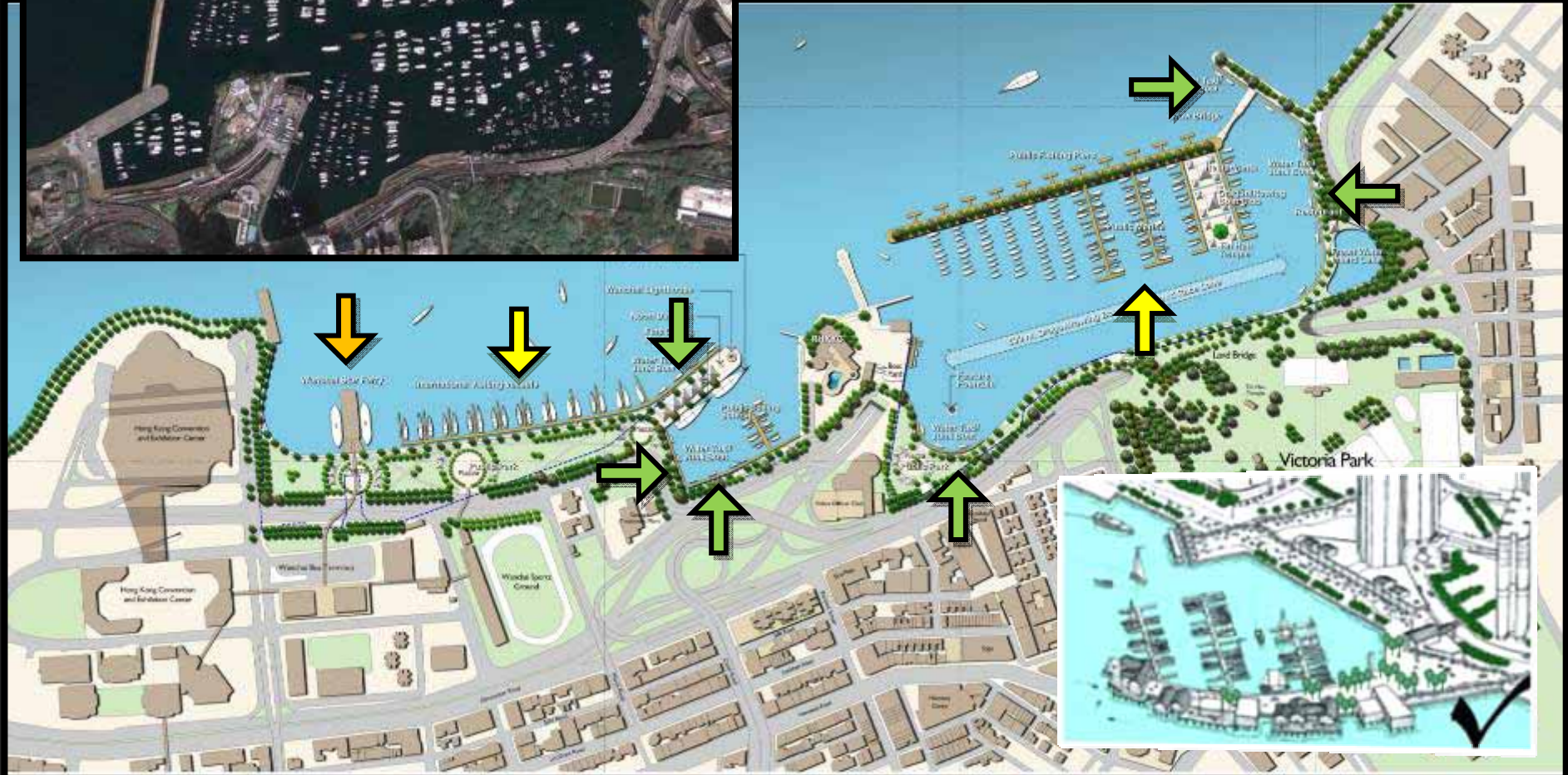
- |                                                                                                                     |                                                                          |
|---------------------------------------------------------------------------------------------------------------------|--------------------------------------------------------------------------|
| 1. Hong Kong Academy of Performing Arts Extension                                                                   | 14. Boardwalk                                                            |
| 2. Landscaped Dock to HKCEC West                                                                                    | 20. Harbour Education Centre                                             |
| 3. Street Market with Outdoor Performance Area                                                                      | 21. Landscaped Deck (extending from Victoria Park)                       |
| 4. Landscaped Deck Link to Waterfront and Ferry Pier                                                                | 22. Re-provisioned Tin Hau Temple                                        |
| 5. Golden Bauhinia Plaza (Multi-Purpose Performance Area)                                                           | 23. Northern Edge of Victoria Park Re-landscaped for Slip Road           |
| 6. Government Helipad                                                                                               | 24. Local Open Space                                                     |
| 7. HKCEC Atrium Link Extension                                                                                      | 25. Waterfront Park                                                      |
| 8. Wan Chai Ferry Pier                                                                                              | 26. Trunk Road Ventilation Building                                      |
| 9. Re-provisioned Indoor Games Hall and Training Pool                                                               | 27. Trunk Road Administration Building (Beneath Island Eastern Corridor) |
| 10. Ornamental Pond with Fountain Show                                                                              | 28. Landscaped Deck over Trunk Road Portal                               |
| 11. Coach Parking, Re-provisioned WSD Belt Water Pumping Station and Wan Chai East Sewage Screening Plant Expansion | 29. Railway Ventilation Building                                         |
| 12. Re-provisioned Wan Chai North PTI                                                                               |                                                                          |
| 13. Kiosk and Leisure Boat Landing Area                                                                             |                                                                          |
| 14. Waterfront Alfresco Dining                                                                                      |                                                                          |
| 15. Amphitheatre with Fountain Show                                                                                 |                                                                          |
| 16. Sculpture Walk                                                                                                  |                                                                          |
| 17. Pier Plaza                                                                                                      |                                                                          |
| 18. Water Sports Centre                                                                                             |                                                                          |

**RETAINED**

- |                                        |
|----------------------------------------|
| 30. Noonday Sun                        |
| 31. Royal Hong Kong Yacht Club (RHKYC) |
| 32. Police Officers' Club              |
| 33. Causeway Bay Typhoon Shelter       |







**Recommendation:** Include land-water interfaces, marinas, and watersports facilities in future developments

Recommendations



# Recommendation A

## Conglomeration of Industrial Services in Yau Ma Tei



# Recommendation B

Add more piers and improve their quality





# Recommendation C

Improve landing steps



# Recommendation D

Increase the amount of sheltered water

Before



After





# Recommendation E

**Include convenient land-water interfaces, marinas, and watersports facilities in future developments**





Cape Town, South Africa





Vancouver, Canada



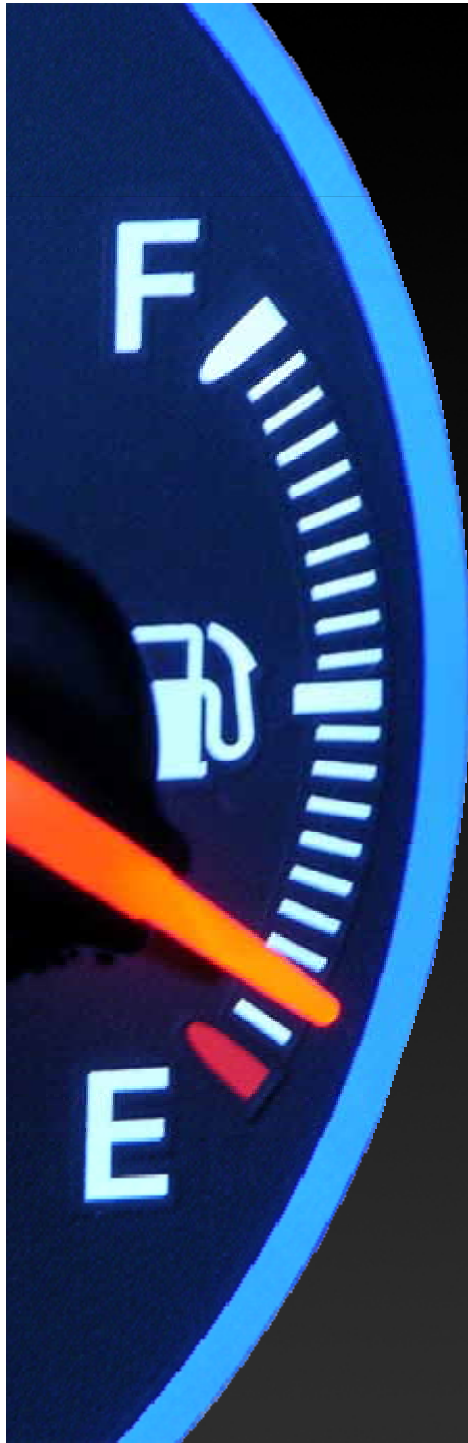
Hong Kong





Singapore





Please  
continue  
our  
research!







