

Harbourfront Commission – Status Report

Nicholas Brooke

Chairman, Harbourfront Commission

Harbour Business Forum Luncheon

1 April 2011

Terms of Reference

- Harbourfront Commission (HC) will:
 - Champion the harbour and its harbourfront
 - Co-ordinate and monitor planning, urban design, development and management of harbourfront
 - Investigate and recommend a range of Public Private Collaboration models appropriate to different types of programmes and projects on and around the harbour

Modus Operandi

- HC comprises 28 official and non-official members with Secretary for Development as Vice Chair
- 3 Task Forces – Hong Kong, Kai Tak and the rest of Kowloon
- Possible fourth Task Force on Land/Water Interface
- Harbour Unit acts as Secretariat

Activities since inception (mid-2010)

- 4 Commission meetings
- 12 Total Task Force meetings
- 11 visits to Action Areas and specific projects
- 47 presentations received

Activities since inception (mid-2010)

■ 11 visits to Action Areas and specific projects:

- Western Wholesale Food Market
- New Central Harbourfront
- Hoi Yu Street Waterfront
- Temporary Treatment Works, Shipyards & Fish Market at Tam Kung Temple Road
- Kai Tai Development
- Tsing Yi Promenade
- West Kowloon Waterfront Promenade
- Initial Development of Hung Hom Waterfront
- Hoi Sham Park
- Kwun Tong Promenade Stage 1
- Cheung Sha Wan Wholesale Food Market

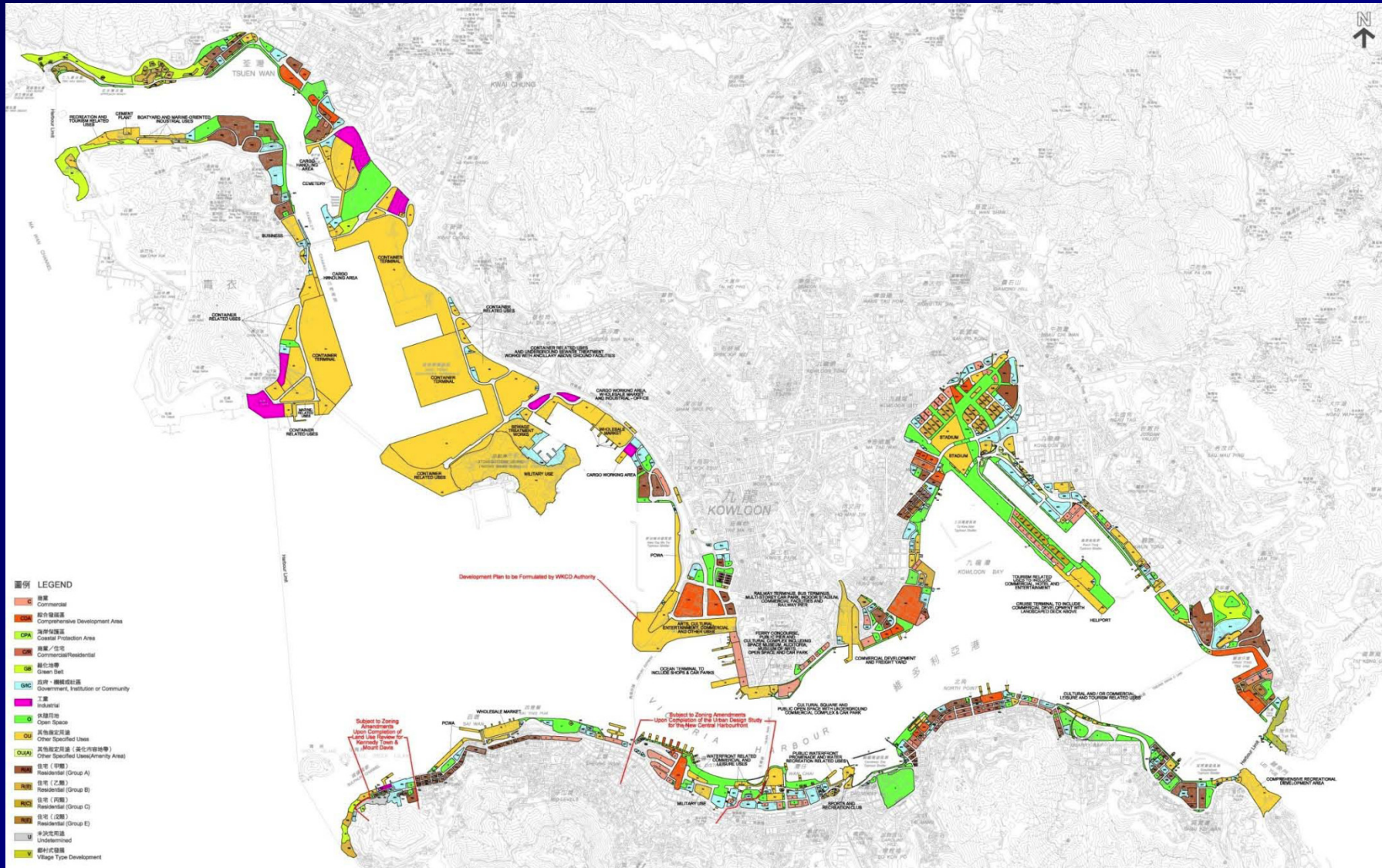
My personal experience to date

- HC has progressed from crawling to walking but not yet running
- Need to fly both high and low
- Need to move from damage limitation to value creation

Commission - “flying high”

- Creation of strategic plan for the whole harbour providing vision and context against which individual projects can be assessed
- Much work initiated and done by PlanD but not on an integrated basis
- Need to collate PlanD proposals with other, private sector, ideas and indentify and promote optimum, holistic solution

Land Use Framework



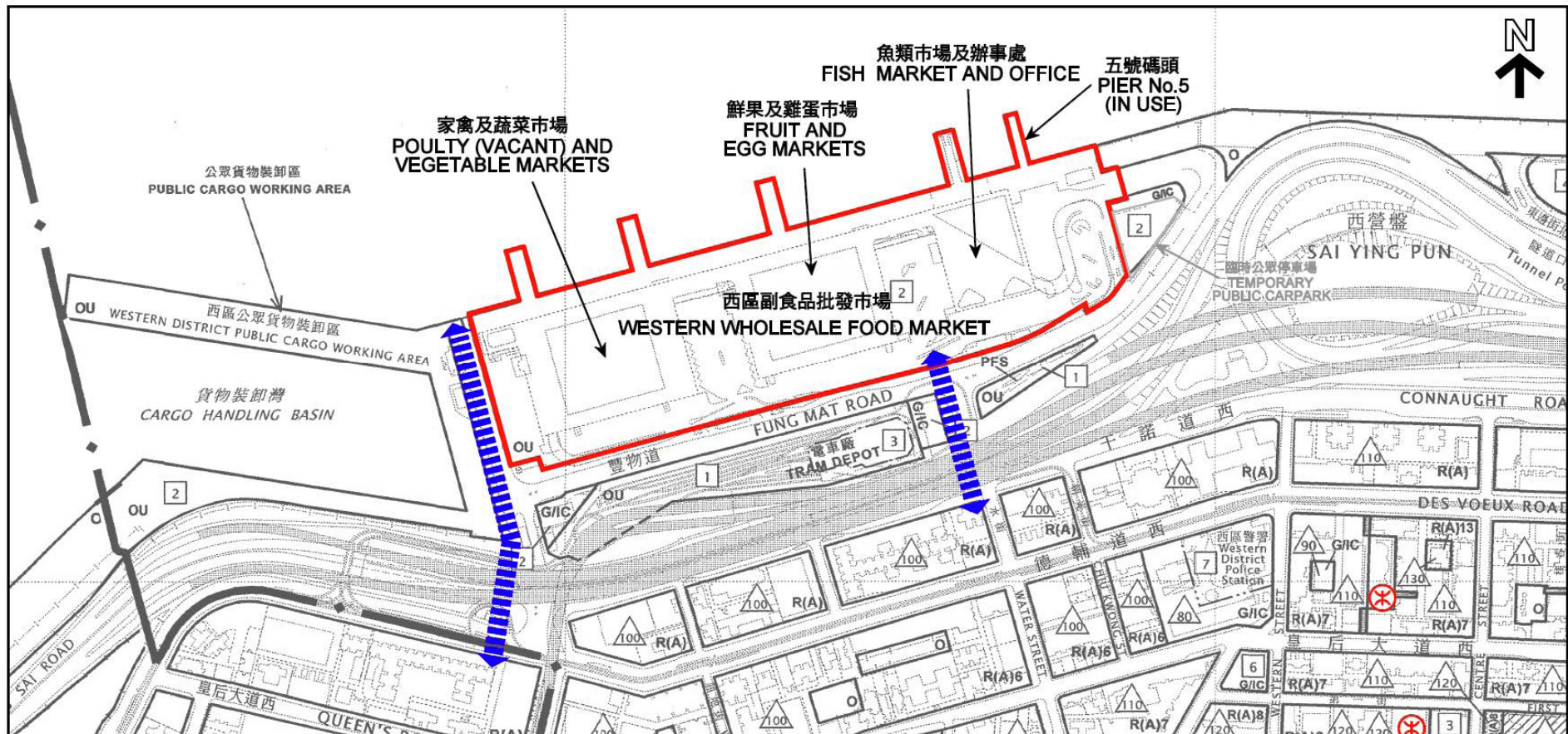
“flying high”

- Recognise interdependence of land/water uses and understand water dependent/related priorities
- Foster essential commercial and leisure/recreational uses within the harbour
- Draft design guidelines for key waterfront sites
- Agree approach to light pollution, signage and advertising along the waterfront

Task Forces – “flying low”

- Examine and critique all government initiatives which impact on the harbourfront
- Review any harbourfront private sector submissions prior to consideration by the TPB and provide views to the Board
- Receive proposals from interested bodies and the private sector for harbour enhancement
- Rationalise incompatible, non-water essential uses

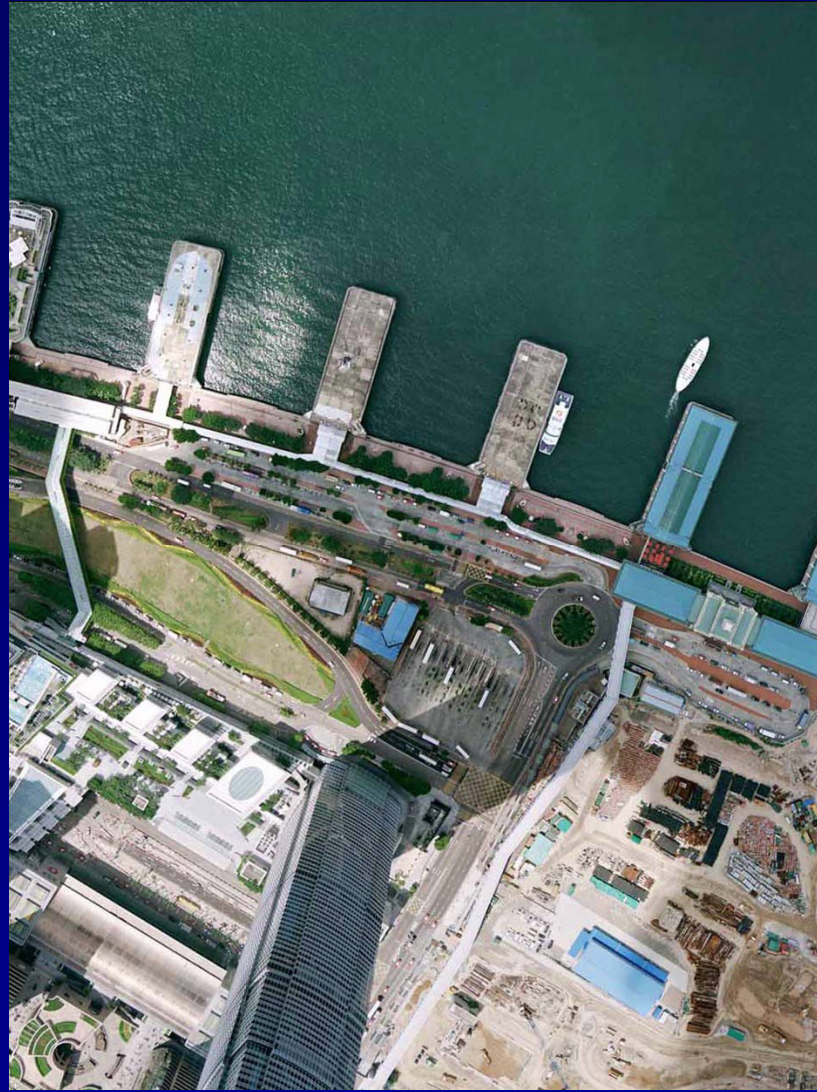
Western Wholesale Food Market



Ventilation Shafts - CWB



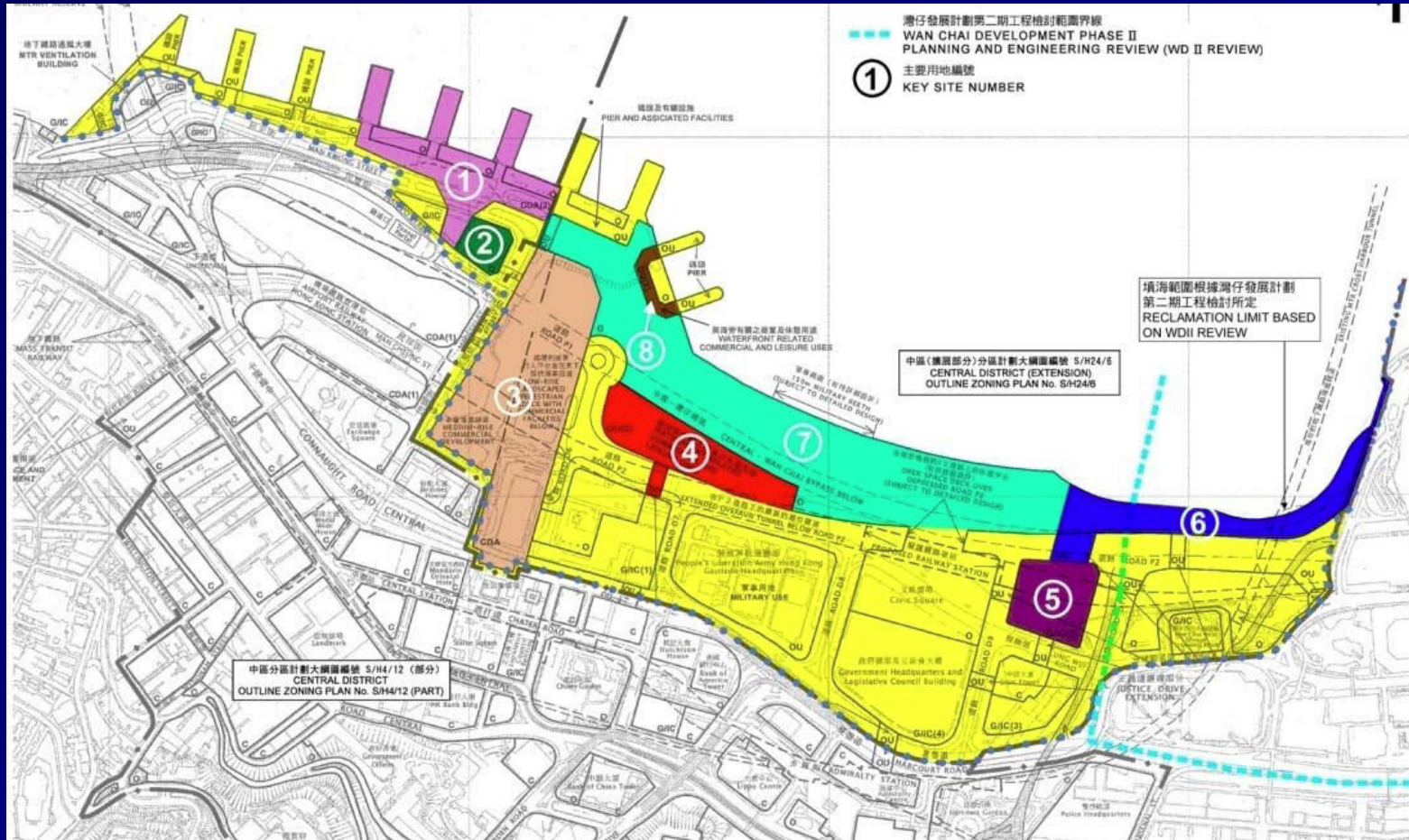
Piers 4-6



Central – Advance Promenade



Sites 4 and 7

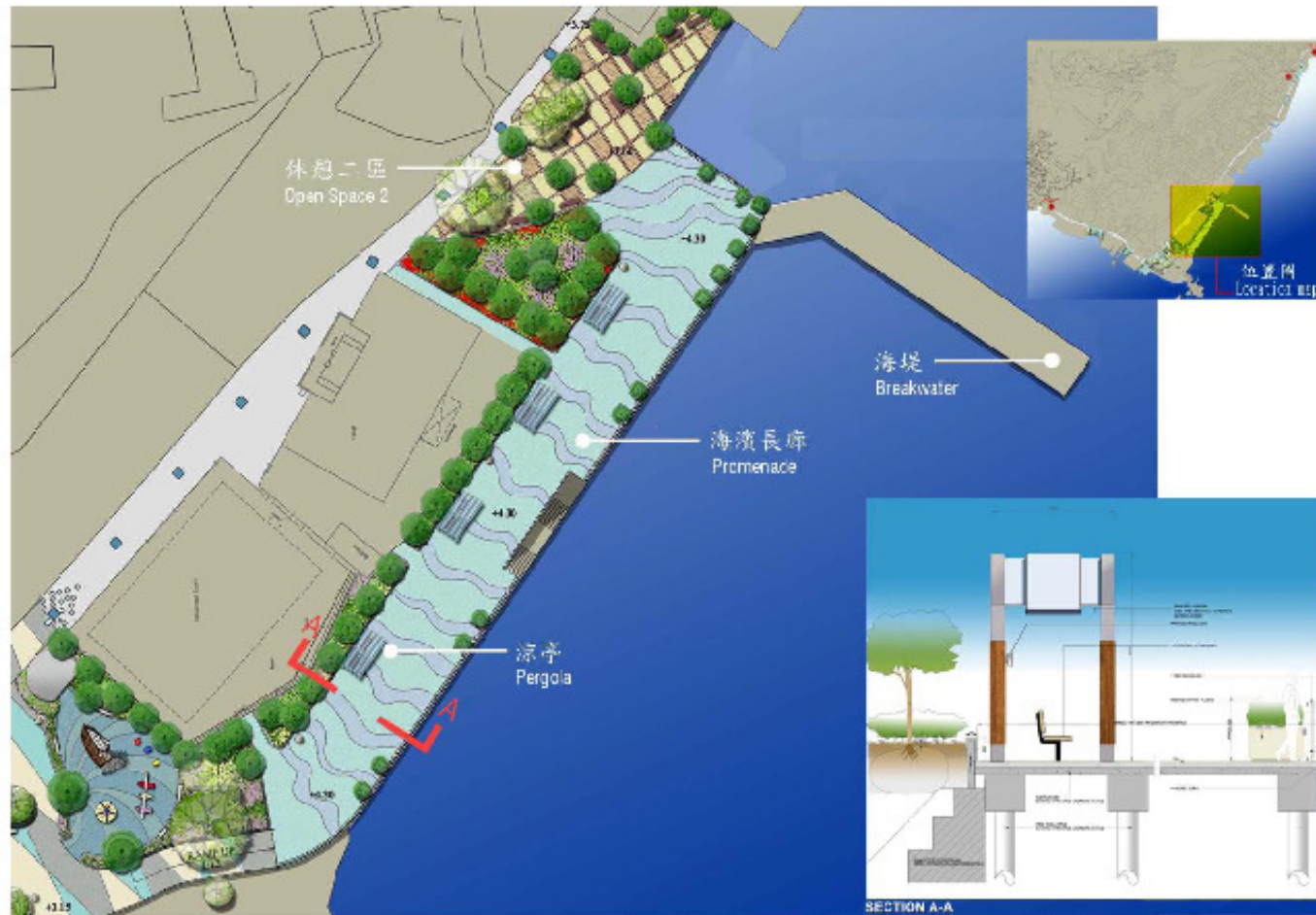


Island East



Possible Elevated Walkway "Sky Trail"

Lei Yue Mun



Lei Yue Mun Waterfront Enhancement Project

Landscape Details (Promenade & Open Space 2)

Yau Tong Bay



Runway Park, Kai Tak

- Legend
- | | | |
|------------------------------|-------------------------|--------------------|
| 1 EVA | 7 time line column | 13 plaza |
| 2 toilet block | 8 lawn planter | 14 grand avenue |
| 3 green buffer mounding | 9 "13" seating | 15 terrace seating |
| 4 path to Cruise Terminal | 10 lawn | 16 pavilion |
| 5 aircraft shades structures | 11 weather station | 17 grass ramp |
| 6 existing runway remnant | 12 waterfront promenade | |

Annex B



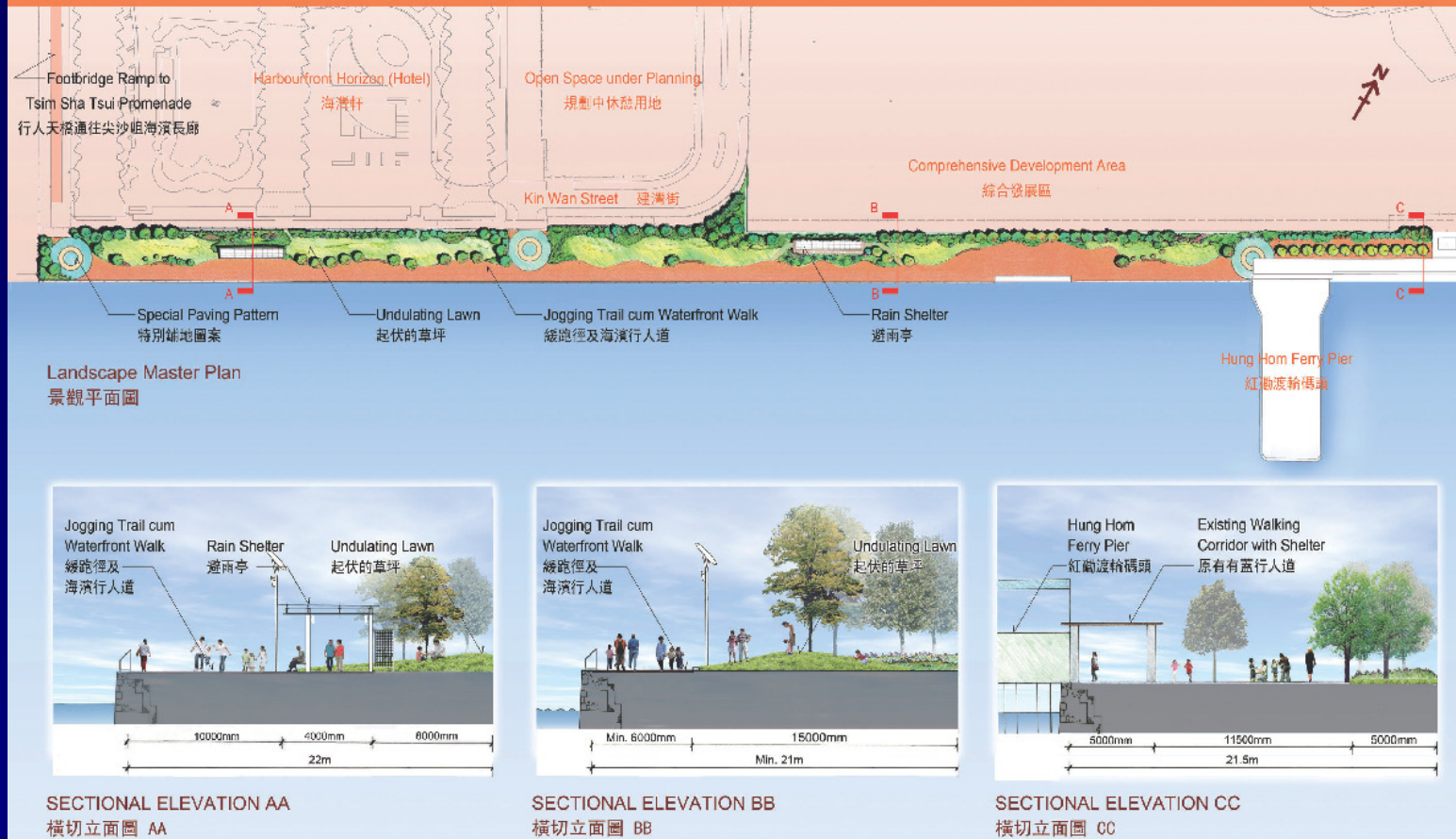
Master Landscape Plan

Hung Hom Promenade

Initial Development of Hung Hom Waterfront Promenade

紅磡海濱長廊初期發展

Appendix 2



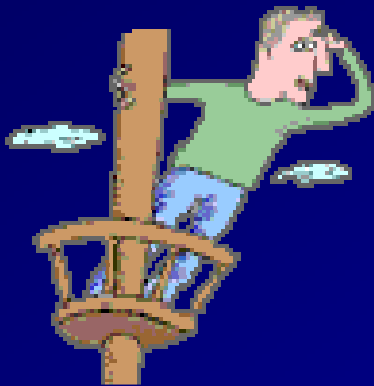
Changing Uses in the Harbour

<p>只供作識別用途 BOUNDARY FOR IDENTIFICATION PURPOSE ONLY</p>	<p>本圖於2011年2月17日製備， 所依據的資料為截至 2010年12月2日的實地照片 PLAN PREPARED ON 17.2.2011 BASED ON SITE PHOTO TAKEN ON 2.12.2010</p>	<p>實地照片 SITE PHOTO 西南九龍分區計劃大綱草圖編號S/K20/25的修訂項E A AMENDMENT ITEM A OF THE DRAFT SOUTH WEST KOWLOON OZP No. S/K20/25</p>	<p>規劃署 PLANNING DEPARTMENT</p>	
			<p>M/K20/11/6</p>	<p>圖 PLAN 3</p>

What I would like to see happen

- Completion of strategic plan by end 2011
- Establishment of fourth Task Force on Land/Water Interface
- Getting to grips with Hong Kong PPC model
- Review of resourcing of Commission
- Introduction of performance scorecard for HC
- Promotion of temporary access to the harbourfront during project construction

**But what would you
like to see?**



Thank you

By Nicholas Brooke